



BATTERIES
INCLUDED



NIGHT TIME
ILLUMINATION



TYRE TREAD DEPTH &
PRESSURE GAUGE
USER GUIDE

THANK YOU FOR PURCHASING THE
MICHELIN TYRE TREAD DEPTH AND
PRESSURE GAUGE

TYRE PRESSURE ADVICE
AND ACTIONS

Always follow the vehicle manufacturer's tyre pressure recommendation which is based on cold tyre temperatures. In addition, keeping your tyres at the correct pressure and using energy efficient tyres reduces fuel consumption and reduces CO² emissions too. Inflation pressures in **all** the tyres on the vehicle (including the spare tyre) should be checked monthly and before any long trips. Make sure of the correct tyre pressures by referring to the vehicle manufacturer's placard, to be found in the handbook, on the door pillar or inside the fuel filler cap.

Tyre pressures should be checked when the tyres are cold. Cold means that the tyres have not run for at least three hours or have been driven less than 1 mile at moderate speed.

Tyre pressures increase while the vehicle is being driven, which is quite normal. If the pressures are checked after the vehicle has travelled a sufficient distance to heat up, they could be 4-5 PSI higher than the recommended cold pressure.

Never deflate tyres to the recommended cold pressure when they are hot. If you intend towing with the vehicle, e.g. a trailer or caravan, **always** consult the vehicle handbook or trailer, caravan or tyre manufacturer for suggestions as increased tyre inflation pressures may be required. Don't forget to check the inflation pressure and the condition of the tyres on the trailer or caravan.

MEASURING TYRE PRESSURE

1. Press the On/ function button (1) to wake up the gauge. The display will first flash a full screen 8.8.8.8 and the torch will illuminate.
2. To select between formats and units a repeated short press of the On/function button will scroll through formats; pressure: PSI/BAR/kPa/kgf/cm²) and tread: mm.

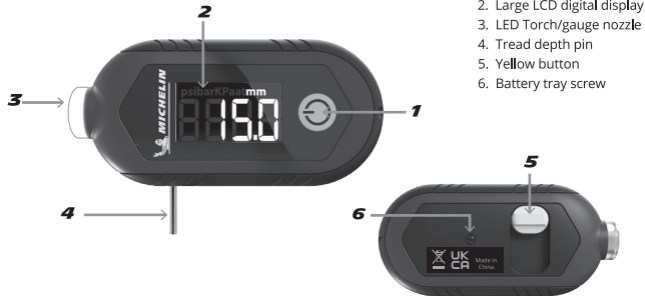
3. If last measurement mode was tread depth mode 0.0 (mm), press the On/ function button again to enter tyre pressure mode and select the required pressure format with a repeated short press of the On/function button.

Note: the gauge will automatically switch off after approx. 30 seconds if no further action is taken.

4. Remove the tyre valve cap then push and hold the gauge nozzle (3) onto the valve stem, making sure a good seal is made between the nozzle and the valve stem so that no hissing sound of escaping air is heard. Hold the gauge on the valve stem tightly until the pressure reading is displayed.
5. After the reading has locked on the display, promptly remove gauge from the valve stem.
6. The pressure reading will show (stay) on the screen for about 30 seconds.
7. To change the unit of pressure showing on the screen, press the On/function button repeatedly to scroll through the units; PSI/BAR/kPa/kgf/cm²).

MICHELIN TYRE TREAD DEPTH & PRESSURE GAUGE

OPERATING FEATURES



1. On/Function button
2. Large LCD digital display
3. LED Torch/gauge nozzle
4. Tread depth pin
5. Yellow button
6. Battery tray screw

SPECIFICATIONS

Tyre pressure range:	2-150 PSI, 0.13-10.3 BAR 13-1034 kPa, 0.14-10.5 kgf/cm ² (displayed as at)
Tyre pressure resolution:	0.5 PSI, 0.05 BAR, 5 kPa, 0.05 kgf/cm ²
Tyre pressure accuracy:	+/- 1 PSI up to 50 PSI +/- 2 PSI 51 to 100 PS +/- 3 PSI 101 to 150 PSI
Tread depth range:	0-15mm
Tread depth resolution:	0.1mm
Tread depth accuracy:	+/- 0.5mm

HOW TO CHECK YOUR TYRE TREAD WEAR LEVELS

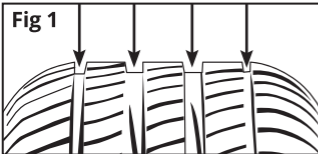
Because the tyres are the only part of the vehicle that grip the road, the depth of tread on your tyres is very important for the safety of your vehicle.

Step 1 - Access the Tyre Tread

This first step in checking tyre tread depth is to get good access to your tyres.

1. Park on a wide, flat and even surface in a safe place off the public highway with the engine switched off.
2. Put the hand brake on and engage first gear (for manual gearboxes) or park (for automatics).
3. Once you have clear and safe access to the tyres you can begin the inspection.

MEASURE ALL TREAD GROOVES



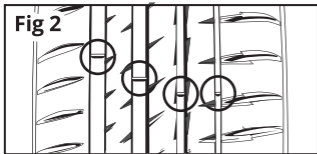
Step 2 - Check the tread

With the tyre tread easily accessible, you can begin to check the depth of the tread and condition of the tyre. Measuring tread depth is not difficult with this simple device, which only requires a few minutes of time.

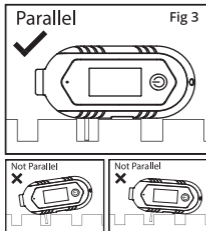
Your vehicles tyre tread depth should conform to the State/Province or local laws of the area where you live or operate your vehicle.

Check the depth of the main tread grooves in several places across and around the tyre (Fig 1). In addition, most car tyres now have tread wear indicators set into the tread grooves (Fig 2), which show when the tyre is worn to approximately 1.6mm of the remaining tread. When these wear indicators become level with the tread surface your tyres should be changed immediately. On a Michelin tyre the position of the tread wear indicators is shown by a molded in Michelin Man in the side wall shoulder area of the tyre. Tyre tread depth is only an indicator of a tyre's suitability for further service. When checking your tyre tread depths, if they are approaching the legal limit or if you have any doubts, get them checked by a tyre specialist.

TREAD WEAR INDICATOR



When measuring tread depth make sure the gauge is positioned as shown in the following diagram Fig 3.



MEASURING TREAD DEPTH

Press the On/function button to wake up the tyre gauge. The display will first flash a full screen 8.8.8.8.

2. The screen will display 0, 0.0 or 0.00 depending on the last measurement mode and unit icon.
3. If last mode is pressure mode, press On/function button again to enter tread depth mode displayed as 0.0 with mm above.
4. Slide the yellow button (5) down on the back until it stops. The metal pin (4) is now visible. Now push the gauge towards the tyre locating the pin in the tyre tread groove and slowly push the gauge towards the tyre surface until it stops. Making sure the gauge sits flat and parallel on the tyre surface as indicated in Fig 3.
5. Remove the gauge from the tyre and read the display. **Note:** The measurement will change if the yellow button is moved during this time so take care not to touch or move the yellow button when removing the gauge from the tyre.
6. **IMPORTANT:** To take the next measurement repeat from step 4 above. Failure to slide the yellow button back down before making contact

with the tyre will give an incorrect reading.

7. Once you have finished taking measurements, slide the yellow button up until it stops and the metal pin is no longer visible.

If for any reason you see a minus measurement on the display retract the pin with the yellow button and turn the gauge off by pressing and holding the On/function button. Then switch the gauge on again before starting at step 4 again.

Note: The gauge will automatically turn off in 30 seconds. You can override this and turn the gauge off by pressing and holding the On/function button down until the display switches off.

Note: It is important to remember that this tread depth gauge is for guidance only. If your tyres are close to the legal minimum then you should get them checked by a professional tyre dealer.

ADVICE

1. Always follow the vehicle manufacturer's pressure recommendation which is based on cold tyre temperature.

2. Use a soft damp cloth to clean your gauge. Do not use any liquids or cleaners.

3. Use a tyre gauge every four weeks and top up the pressure in your tyres with a MICHELIN tyre inflator to reduce fuel consumption, increase tyre life and reduce CO² emissions.

Replacing the Batteries

If LOB (low battery warning) is displayed the batteries should be replaced. To replace the batteries, remove the screw from the rear of the unit. Turn the unit over and pull the rear of the unit backwards exposing the battery tray/batteries, Fig 4. Insert 2 new CR2032 lithium batteries and reverse the sequence. The small icon in the battery compartment shows correct polarity installation. Recycle spent batteries.



TROUBLE SHOOTING

If the display is blank

- Make sure that the pressure seal between the tyre gauge and the valve stem is free from leaks.

If the unit has an unusually high or low reading

- Check to make sure that there are no leaks in the system.
Re-zero the gauge by pressing and holding the on/function button to force a shut-down and then restart with the on/function button.

If the display reads LOB

- The batteries are exhausted and must be replaced.

If the display shows a minus measurement

- Retract the pin with the yellow button and turn the gauge off by pressing and holding the on/function button. Then switch the gauge on again before starting at step 4 again.

For all other issues please call the MICHELIN helpline:
+44 (0)800 731 4973

Scan the QR code to access further product information.



Customer enquiries:

We're at your service. Let us help you, find a better way forward.

Customer enquiries UK & ROI:

+44 (0)800 731 4973

www.michelin-lifestyle.com

MICHELIN and/or the Michelin Man Device and/or BIBENDUM are trademark(s) owned by, and used with the permission of, the Michelin Group. © 2023 Michelin
Manufactured under license by Market Infinity Investments Limited © 2023. Distributed by Ideas International Ltd.
The Engine Room, 18 Battersea Power Station, London, SW11 8BZ

**PLEASE RETAIN THESE INSTRUCTIONS
FOR FUTURE REFERENCE**



One (1) year Limited Warranty

Made in China