



**MICHELIN**



**QUICK RELEASE  
CONNECTOR**



**PRESSURE  
PRE-SET**



**DEFLATION  
VALVE**

**12V HIGH PERFORMANCE PROGRAMMABLE  
TYRE INFLATOR**

*USER GUIDE*

# THANK YOU FOR PURCHASING THE MICHELIN 12V HIGH PERFORMANCE PROGRAMMABLE TYRE INFLATOR

Please read these operating instructions carefully before using the inflator. Improper use can cause damage to property and possibly harm the user. When using the inflator to inflate tyres ensure the vehicle is parked in a safe location, off the road, with the vehicle handbrake on and where your personal safety is not at risk.

- This inflator can inflate car tyres up to 51 PSI, (**do not inflate space saver tyres**) motorcycle tyres and bicycle tyres up to 150 PSI.
- Low pressure items such as sports balls and small inflatable toys must **ONLY** be inflated using the adapters provided.



Only suitable for vehicles with a negative earth. Check your vehicle owner's manual.

**Max power requirement during normal use: 15 AMPS / 180 WATTS.**



## **WARNING! COMPRESSED AIR CAN BE DANGEROUS**

- This inflator is not intended for use by persons with lack of experience and knowledge, unless they have been given supervision or instruction concerning its use by a person responsible for their safety.
- Never allow children to use this tyre inflator. Children should be supervised to ensure that they do not play with the inflator.
- Never leave unattended when running.
- Never overinflate.
- Always use in a safe area away from traffic and other dangers.

**Never run for more than 10 minutes. After each 10 minute run allow inflator to cool for 15 minutes.**



## **WARNING! ENSURE CORRECT TYRE PRESSURES**

- Correct tyre pressure is vital for road safety.
- Under or overinflated tyres can be dangerous.
- Always ensure that regular weekly checks are carried out to the vehicle manufacturer's recommended pressures including the spare, but excluding space saver tyres. Always check before a long journey or after loading or unloading the vehicle.
- Always check pressures in an ambient temperature, never immediately after a long journey.
- Tyre pressures should be checked when the tyres are "cold". Cold means that the tyres have not run for at least three hours or have been driven less than 1 mile at moderate speed.



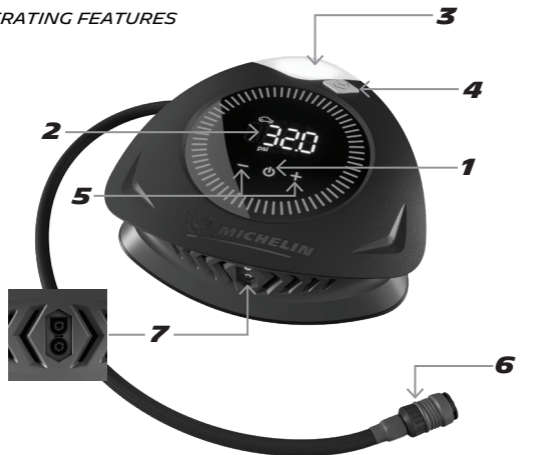
## **CAUTION**

- Inspect the inflator before each use.
- Do not leave connected to the 12V DC socket when unattended.
- To reduce the risk of electric shock, do not expose the inflator to water or other liquids. Do not place or store where it can get wet, fall or be knocked into water.
- Do not kink or block the air hose while the inflator is working.
- Do not use the inflator if cracked, broken, melted, burnt, wet or any of the components are damaged.
- Only use the adapters supplied with the inflator.
- The inflator contains no user serviceable parts - Do not open.

**THIS PRODUCT CONFORMS TO THE CRITERIA SET OUT IN PROCEDURE 2 AS DEFINED IN ANNEX VI OF DIRECTIVE 2000/14/EC, ROHS DIRECTIVE 2011/65/EU AND EMC DIRECTIVE 2004/108/EC.**

# **MICHELIN 12V HIGH PERFORMANCE PROGRAMMABLE TYRE INFLATOR**

## **OPERATING FEATURES**

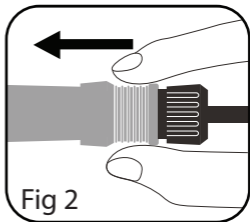
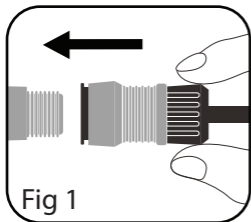


1. Inflation start/stop
2. White LED digital display
3. COB worklight
4. Deflation button
5. Selection buttons/worklight on/off
6. 50 cm (approx.) high pressure air hose with quick release valve connector
7. Input for 300 cm (approx.) detachable power cord

## **SPECIFICATIONS:**

|                            |  |
|----------------------------|--|
| Max pressure:              | 51 PSI for car tyres, 150 PSI for motorcycle & bicycle tyres   |
| Pressure accuracy:         | +/- 1 PSI 3-50 PSI, +/- 2 PSI 51-100 PSI +/- 5 PSI 101-150 PSI |
| Pressure format:           | PSI / BAR / kPa  |
| Max current:               | 15 AMPS/180 WATTS  |
| Fuse size:                 | 15A glass  |
| Power cord length:         | 300cm (approx.)  |
| High pressure hose length: | 50cm (approx.)   |

## CONNECTING THE HIGH-PRESSURE HOSE



### Schrader Valve

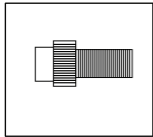
Inflation: the quick release valve (7) can be directly connected to the Schrader Valve by holding the quick release connector at its base (Fig 1) and pushing the connector firmly onto the valve. While still pushing forward, slide your thumb and forefinger down into the grey collar and continue pushing until the collar stops moving forward (Fig 2). A successful connection will result with no air escaping (hissing) from the valve. If a hiss occurs, remove the connector by holding the grey collar and pulling it back and try again.

## ADAPTERS

Included with your MICHELIN 12v High Performance Programmable Tyre Inflator are 3 adapters, to enable you to inflate other items.

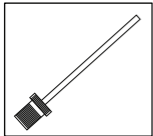
To avoid overinflation, always follow the manufacturer's instructions on the items to be inflated.

### Presta Valve Adapter



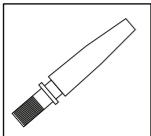
Inflation: Screw the Presta Valve adapter onto the cycle tyre valve stem. Then holding the quick release connector at its base (Fig 1) push the connector firmly onto the adapter. While still pushing forward, slide your thumb and forefinger down into the grey collar and continue pushing until the collar stops moving forward (Fig 2). A successful connection will result with no air escaping (hiss) from the adapter. If a hiss occurs, remove the connector by holding the grey collar and pulling it back and try again.

### Needle Adapter



To inflate footballs and other balls use the needle adapter. To connect the needle adapter to the quick release valve connector, push and hold the needle adapter into the hole of the connector with one hand while holding quick release connector at its base (Fig 1) push the connector forward. While still pushing forward, slide your thumb and forefinger down into the grey collar and continue pushing until the collar stops moving forward (Fig 2). The needle valve is now locked into the connector. To remove the needle valve, hold it with one hand and pull the grey collar back with the other hand.





### **Small Toy Adapter**

Small inflatable toys use the small toy inflator adapter. To connect the adapter to the quick release valve connector push and hold the adapter into the hole of the connector with one hand while holding the quick release connector at its base (Fig 1) push the connector forward. While still pushing forward, slide your thumb and forefinger down into the grey collar and continue pushing until the collar stops moving forward (Fig 2). The adapter is now locked into the connector. To remove it hold it with one hand and pull the grey collar back with the other hand.

## **DIGITAL DISPLAY**

The inflator is shipped with a protective film over the digital display. This should be peeled off prior to use to get a clearer view of the display.

The digital display can be used to monitor air pressure when inflating your desired objects.

## **PRESSURE INDICATION**

When the inflator is switched on and connected to the tyre, the current pressure will be displayed on the screen. Tyre pressure reading accuracy +/- 1 PSI 3-50 PSI, +/- 2 PSI 51-100 PSI +/- 5 PSI 101-150 PSI.

## **CORRECT TYRE PRESSURES**

To ensure safety, please check the recommended pressures by reading the instruction manual provided with your vehicle/motorcycle/bicycle/inflatable item. Compressed air can be dangerous. Overinflating can be dangerous and possibly result in injury. Under or overinflated tyres can be dangerous and possibly result in injury.

## **TYRE INFLATION**

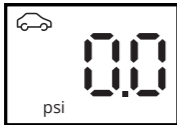
Improper attached hoses or accessories can become detached under pressure and cause serious injury. Possible air leaks can cause faulty pressure readings. Make sure all connections are tightly secured before inflating.

The inflator will stop automatically when the selected pre-set pressure is reached. To stop inflation at any point press the start/stop button (1)

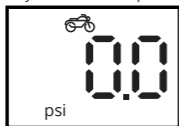
1. Fully unwind the power cable and connect the 12v power cord plug into the inflator input port (7) and plug the 12v power plug into the vehicle's accessory socket. Now unclip the high pressure hose and connect it to the tyre valve as shown in Fig 1/2. A successful connection will show the current tyre pressure. NOTE: Always connect the 12v power before connecting the high pressure hose to the tyre.

2. Press and hold the inflation start/stop button (1) for 2 seconds (object and pressure format icons will flash). While flashing press **+** (6) to switch between the following five default inflation modes. The display will return to 0.0 to confirm the new inflation mode is set.

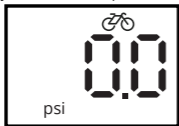
Car mode: default pressure is 32 psi. Adjustable range: 14-51 psi.



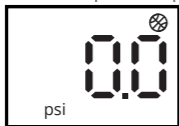
Motorcycle mode: default pressure is 34 psi. Adjustable range: 14-150 psi.



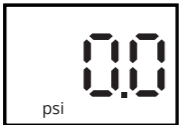
Bicycle mode: default pressure is 45 psi. Adjustable range: 14-150 psi.



Ball mode: default pressure is 8 psi. Adjustable range: 2-16 psi.



Free mode: default pressure is 0 can be adjusted freely under free mode.  
Adjustable range: 3-150 psi.



3. Check the tyre pressure shown on the display. When connected correctly the gauge will display the current pressure in the tyre. If this is the pressure as stated in your vehicle's handbook, you can simply remove the tyre valve connector (6). If the tyre pressure is lower than the stated pressure and you have selected one of the 5 pre-set default settings press the start/stop (1) to inflate the tyre

If you are inflating multiple tyres and you unplugged the power between tyres you will have to reset the inflation mode, pressure format and target pressure (if different from the default settings.) The inflator does not have an inbuilt memory.

## **TO SET A TARGET PRESSURE**

To change the air pressure press the **+** or **-** (5) buttons to increase or decrease the pressure setting in 1.0 PSI/0.1 BAR/10 kPa increments. Press and hold the **+** or **-** buttons and the target value will change rapidly +5 PSI/0.5 BAR/50 kPa, release to stop. Once the display returns to 0.0 the pressure is set.

Note this inflator has a deflate feature. If you find the current tyre pressure is higher than the desired pressure press the deflation button (4) to reduce the pressure. If you remove too much air follow the previous steps to inflate to the correct pressure.

## **TO CHANGE THE PRESSURE FORMAT**

The default pressure is PSI. To change to BAR or kPA press and hold the inflation start/stop button for 3 seconds (object and pressure format icons will flash) while flashing press **-** button to scroll between the pressure formats. The display will return to 0.0, 0.00 or 0 to confirm the new pressure format is set.

## **WORKLIGHT**

To switch the worklight on press **+** & **-** buttons together. To switch off press **+** & **-** together again.

## **12V POWER PLUG**

### **TO REPLACE FUSE IN 12V PLUG**

Undo knurled ring anti-clockwise



Replace fuse (15A) and knurled ring.



## CONVERSION CHART

| PSI | kPa | BAR  |
|-----|-----|------|
| 10  | 69  | 0.69 |
| 20  | 138 | 1.38 |
| 30  | 207 | 2.07 |
| 40  | 276 | 2.76 |
| 50  | 345 | 3.45 |
| 60  | 414 | 4.14 |
| 70  | 483 | 4.83 |
| 80  | 552 | 5.52 |
| 90  | 621 | 6.21 |
| 100 | 689 | 6.89 |

### The display shows garbled characters

- Remove the 12v plug and leave the unit off for 5 minutes. If the display is still unreadable when the 12v plug is connected again contact the helpline number below.

### Display does not illuminate Unit fails to run when power button is pressed

- Check the 12v plug is fully inserted into 12V socket in the vehicle. Blue 12v plug light should illuminate.
- Check the 12v plug fuse (15A glass type).
- Your vehicle may require the ignition key to be in the accessory position.
- Check the connection between the cable and the inflator.  
If these checks fail contact the helpline number below.

### Power lead/plug becomes hot

- If power lead is coiled, uncoil to full length.
- Ensure 12V socket is clean with no debris in it.
- Ensure 12V plug components are tight and clean.

### Unit is running but the tyre is not inflating

- Check that the quick release connector is correctly fitted to tyre valve.

For all other issues please call the helpline: **+44 (0)800 731 4973**

## OTHER MICHELIN PRODUCTS AVAILABLE



*CORDLESS  
TYRE INFLATORS*



*FOOTPUMPS*



*TYRE  
PRESSURE GAUGES*



*JUMP STARTERS*



*CAR MATS*

Watch the Video  
Short walkthrough video  
highlighting product features  
and benefits



**Customer enquiries:**  
We're at your service. Let us help  
you, find a better way forward.  
**Customer enquiries UK & ROI:**  
+44 (0)800 731 4973  
[www.michelin-lifestyle.com](http://www.michelin-lifestyle.com)

MICHELIN and/or the Michelin Man Device and/or  
BIBENDUM are trademark(s) owned by, and used with the  
permission of, the Michelin Group. © 2023 Michelin  
Manufactured under license by Market Infinity Investments  
Limited © 2023. Distributed by Ideas International Ltd.  
The Engine Room, 18 Battersea Power Station, London,  
SW11 8BZ

**PLEASE RETAIN THESE INSTRUCTIONS FOR FUTURE REFERENCE**



One (1) year Limited Warranty

